

Commissioned by the Omiya City (Japan) Community Band to commemorate the 80th birthday of Toshio Akiyama, a master of the band world.

SENSEI'S RIDE ON THE CHERRY BLOSSOM EXPRESS

E♭ Tuba B.C.

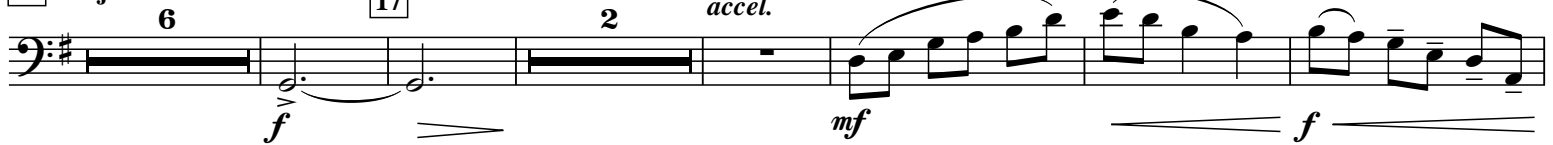
Robert W. Smith
(ASCAP)

SL-D51 Train (♩ = 84)

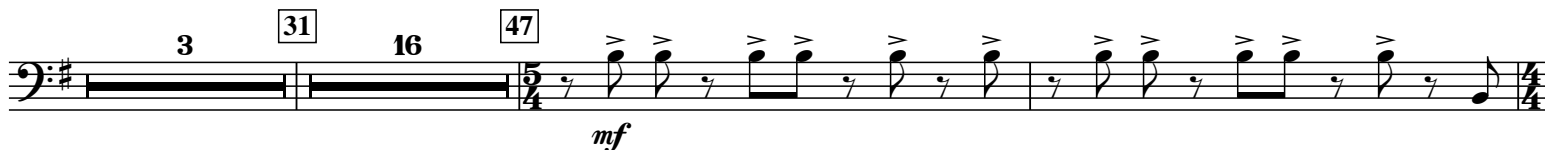
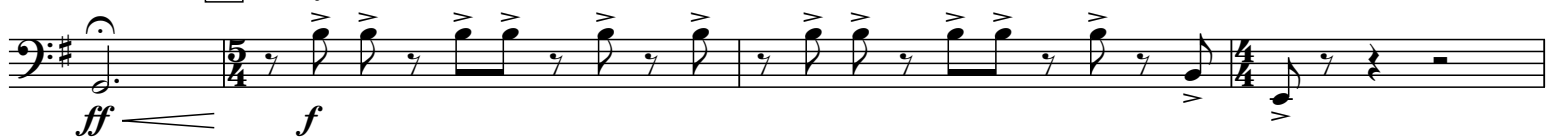
012-3960-00



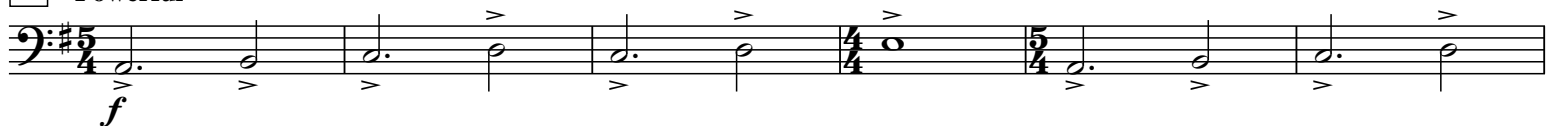
10 Majestic



25 Lively (♩ = 132)



65 Powerful



© 2010 Birch Island Music Press (ASCAP), P.O. Box 680, Oskaloosa, IA 52577, USA

International Copyright Secured. All Rights reserved. Printed in U.S.A.

WARNING! This composition is protected by copyright law. To copy or reproduce it by any means is an infringement of the copyright law.

E♭ Tuba B.C.

73

sfz

sfz

sfz

mp

86 2 88 8

ff

96 8 104

mf

112 4

mf

120 10

f

134 Building (♩ = 132) *accel.*

mf cresc.

mf

sfz

143 Powerful (♩ = 152) *rall.*

3

ff

sfz